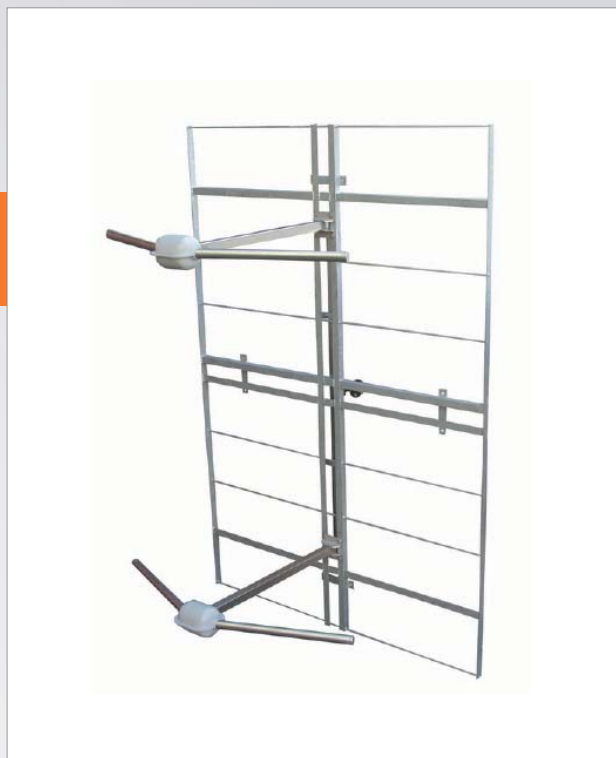


# FM-05H

## FM PANEL ANTENNA

### FEATURES

- horizontal polarization
- broadband 87.5 ÷ 108 MHz
- 6.5 dB gain
- directional pattern
- suitable as a component in various arrays on triangular towers
- stainless steel dipoles



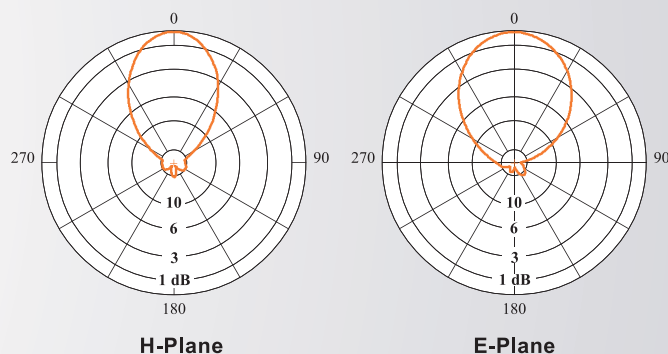
### ELECTRICAL DATA

ANTENNA TYPE	FM-05H
FREQUENCY RANGE	87.5 ÷ 108 MHz
IMPEDANCE	50 ohm
CONNECTOR	7/16 F or 7/8" EIA
MAX POWER	3 kW (7/16 F), 5 kW (7/8" EIA)
VSWR	≤ 1.15
POLARIZATION	Horizontal
GAIN (referred to half wave dipole)	6.5 dB
HALF POWER BEAMWIDTH	E-Plane ± 38° H-Plane ± 28°
LIGHTNING PROTECTION	All Metal Parts DC Grounded

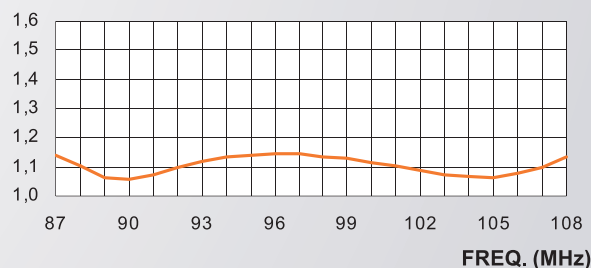
### MECHANICAL DATA

DIMENSIONS	2500 x 1700 x 1113 mm
WEIGHT	62 kg
WIND SURFACE	0.72 m <sup>2</sup>
WIND LOAD (at 150 km/h)	1.05 kN
MAX WIND VELOCITY	270 km/h
MATERIALS	Reflector (hot dip galvanized steel) Dipoles (stainless steel) Internal parts (silver plated brass, polished brass, deoxidized aluminium) Radome (fiberglass)
ICING PROTECTION	Feed point radome
RADOME COLOUR	Grey (standard)
MOUNTING	Directly on supporting mast

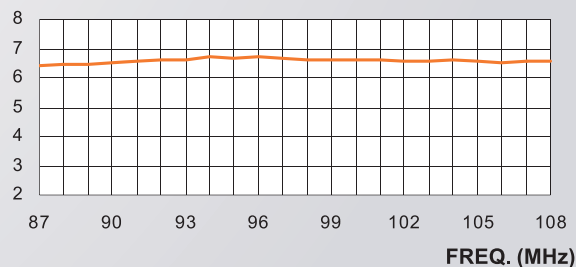
### RADIATION PATTERNS (Mid Band)



### VSWR



### GAIN (dB)



# FM-05H

## FM PANEL ANTENNA

### FEATURES

- radiating systems with FM-05H panel
- high power systems
- omnidirectional or directional patterns
- equal or unequal split ratio power distribution network
- broadband 87.5 ÷ 108 MHz



FM-05H/12 (6x2)  
VANCOUVER, B.C., CANADA

### ELECTRICAL DATA

FREQUENCY RANGE	87.5 ÷ 108 MHz
IMPEDANCE	50 ohm
CONNECTOR	EIA flange according to system power rating
POWER RATING	The antenna system can accept any power according to requirements
VSWR	≤ 1.2 Throughout the frequency range (Lower figures for individual channels on request)
POLARIZATION	Horizontal
GAIN	Refer to table
HORIZONTAL PATTERN	Any type according to requirement
VERTICAL PATTERN	Null fill, beam tilt and special requirements to order
OTHER FEATURES	The antenna system can be supplied in split feed configuration (two equal halves). Each half can accept full power.

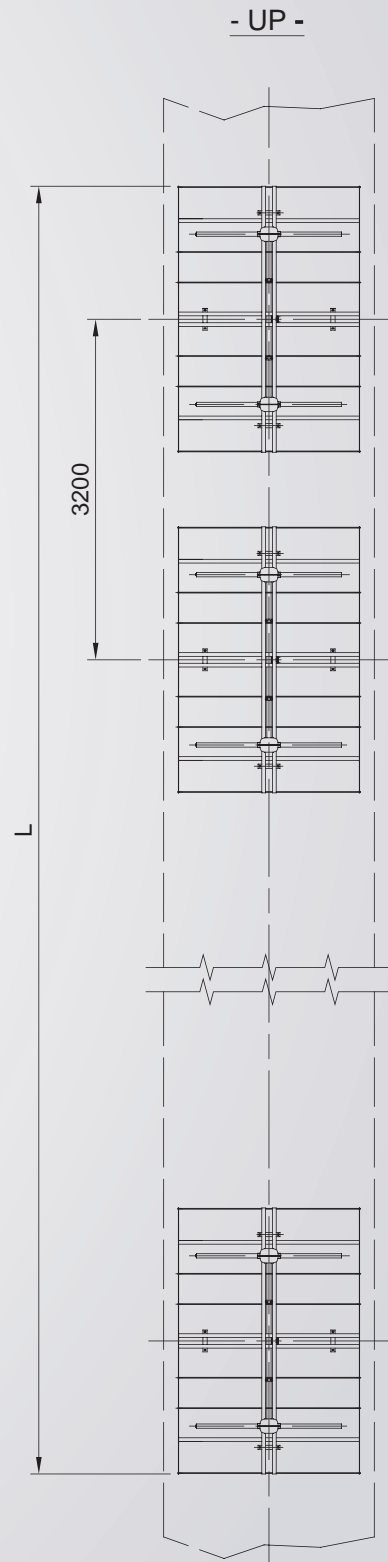
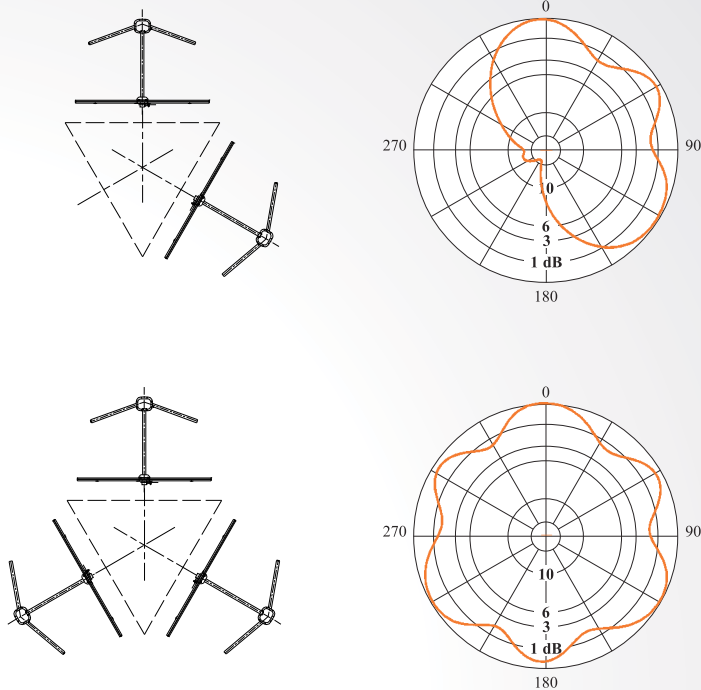
### MECHANICAL DATA

HEIGHT OF ARRAY	Subject to number of bays
TOTAL NET WEIGHT	Refer to table
WIND LOAD	Refer to table
PRESSURIZABLE	Yes
RADOME COLOUR	Grey (standard)
MOUNTING HARDWARE	Available upon request

# FM-05H

## FM PANEL ANTENNA

### HORIZONTAL PATTERNS WITH 2, 3 FACES AT 98 MHz



#### TECHNICAL DATA

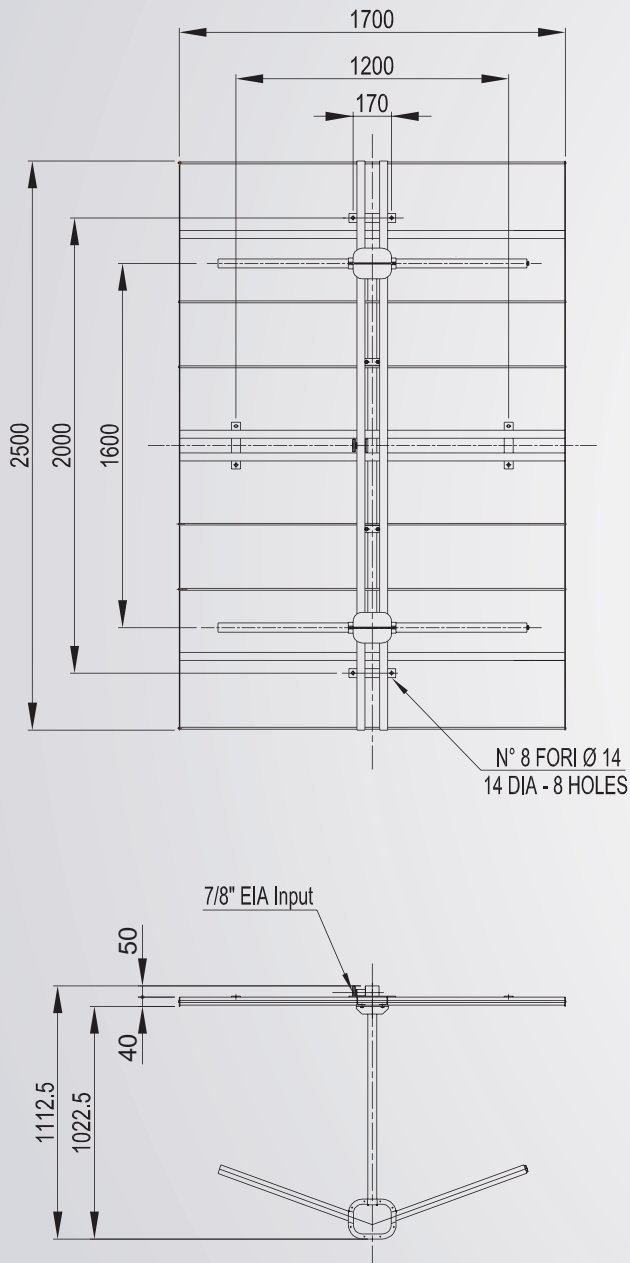
NUMBER OF BAYS	PANELS PER BAY	GAIN dB (1)	GAIN TIMES (1)	WEIGHT kg (2)	ANTENNA HEIGHT L m	WIND LOAD kN (3)
1	2	3.3	2.1	140	2.5	1.96
	3	1.6	1.4	210		2.20
2	1	9.5	8.9	140	5.7	2.10
	2	6.5	4.5	287		3.93
4	3	4.8	3.0	438	12.1	4.40
	1	12.7	18.6	287		4.20
	2	9.7	9.3	596		7.85
6	3	8.0	6.3	892	18.5	8.80
	1	14.5	28.2	438		6.30
	2	11.5	14.1	892		11.78
8	3	9.8	9.6	1260	24.9	13.20
	1	15.8	38.0	596		8.40
	2	12.8	19.0	1102		15.71
	3	11.1	12.9	1695		17.61

(1) referred to half wave dipole. Losses of power distribution network not included.  
 (2) without mounting hardware  
 (3) v= 150 km/h

# FM-05H

## FM PANEL ANTENNA

### DIMENSIONAL DETAILS



### VERTICAL PATTERN

— Without null fill  
 — With null fill and beam tilt

